



EDUCATION FOR LIFE SCRUTINY COMMITTEE - 27TH FEBRUARY 2017

SUBJECT: KEY STAGE 4 / KEY STAGE 5 PERFORMANCE 2016

REPORT BY: ANDREW WILLIAMS, EDUCATION ACHIEVEMENT SERVICE (EAS)

1. PURPOSE OF REPORT

1.1 To inform Members of Caerphilly schools' 2016 key stage 4 and key stage 5 performance.

2. SUMMARY

2.1 This report presents members with the final published 2016 performance data for key stage 4 and 5.

3. LINKS TO STRATEGY

Education Achievement Services (EAS) Business Plan
Education Service Improvement Plan
Single Integrated Plan

3.1 The attainment results published in this report contribute towards the following Well-being Goals within the Well-being of Future Generations Act (Wales) 2016:

- *A prosperous Wales**
- *A more equal Wales**

This is because 'a prosperous Wales' is about developing a well educated and skilled population and 'a more equal Wales' is defined as a 'society that enables people to fulfil their full potential no matter what their background or circumstances, education attainment is a part of fulfilling that potential.

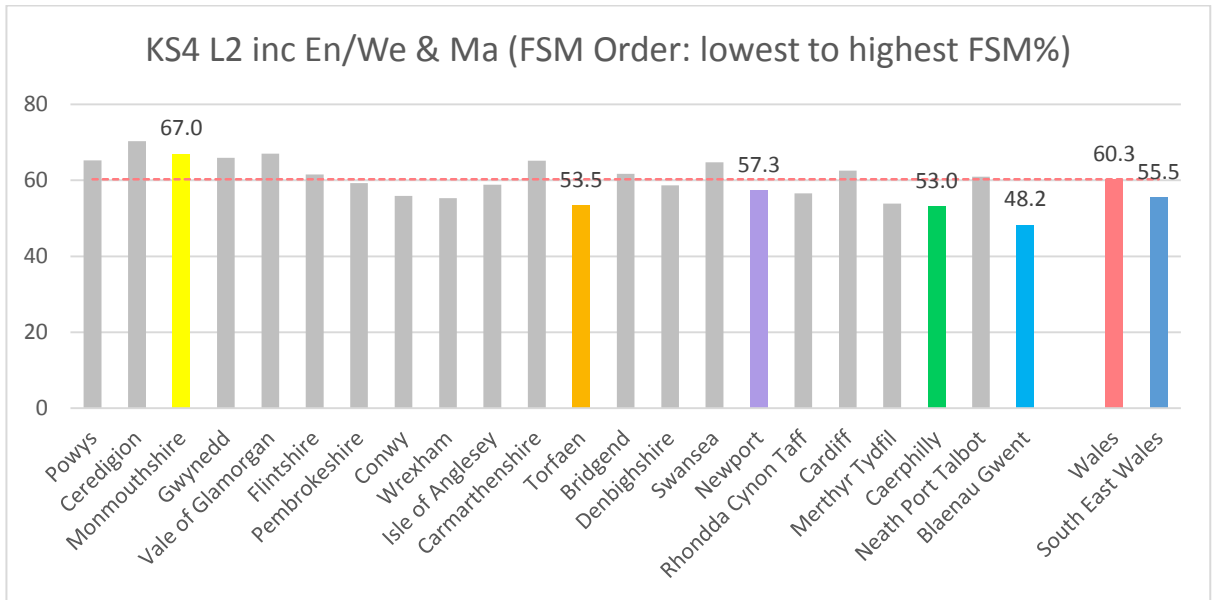
4. KEY STAGE 4

4.1 At Key Stage 4, the following key performance measures are used to evaluate and compare the full range of achievement within and across local authorities:

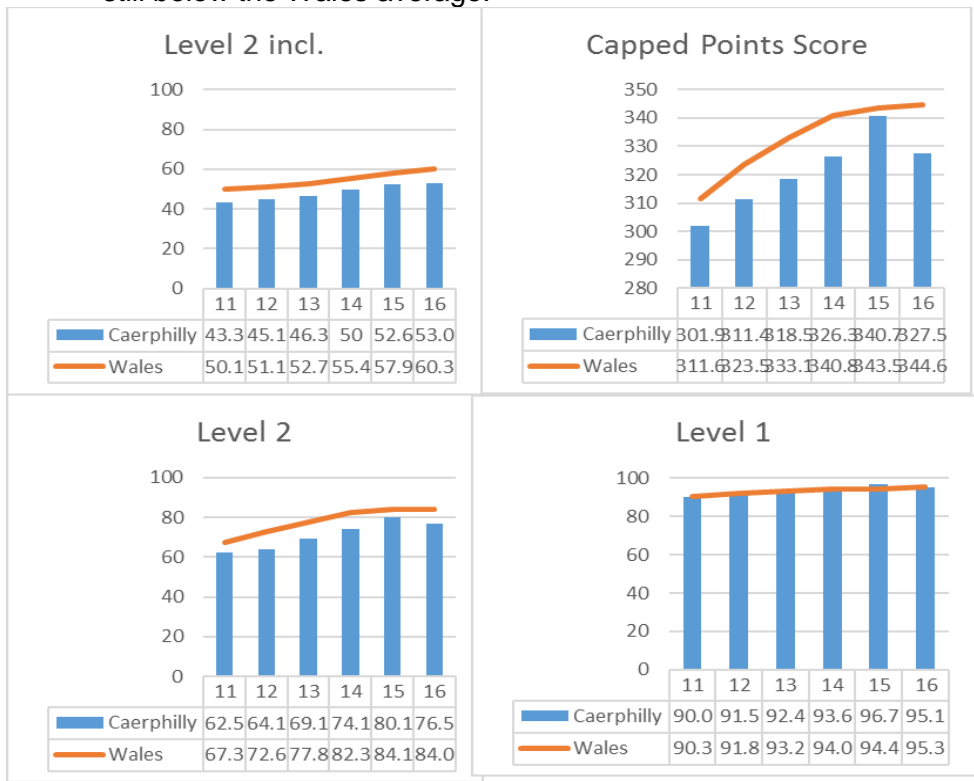
- Level 2 threshold including English or Welsh first language and mathematics (L2+)
- Level 2 threshold (L2)
- Level 1 threshold (L1)
- Core Subject Indicator (CSI)
- Capped Points Score (CPS)
- Level 2 qualification (equivalent to GCSE A*-C) in English or Welsh first language
- Level 2 qualification (equivalent to GCSE A*-C) in mathematics
- Level 2 qualification (equivalent to GCSE A*-C) in science

4.2 Of these, the Level 2 threshold including English/Welsh first language and mathematics and the capped point score are particularly important and WG publishes local authority benchmarks based on these each year.

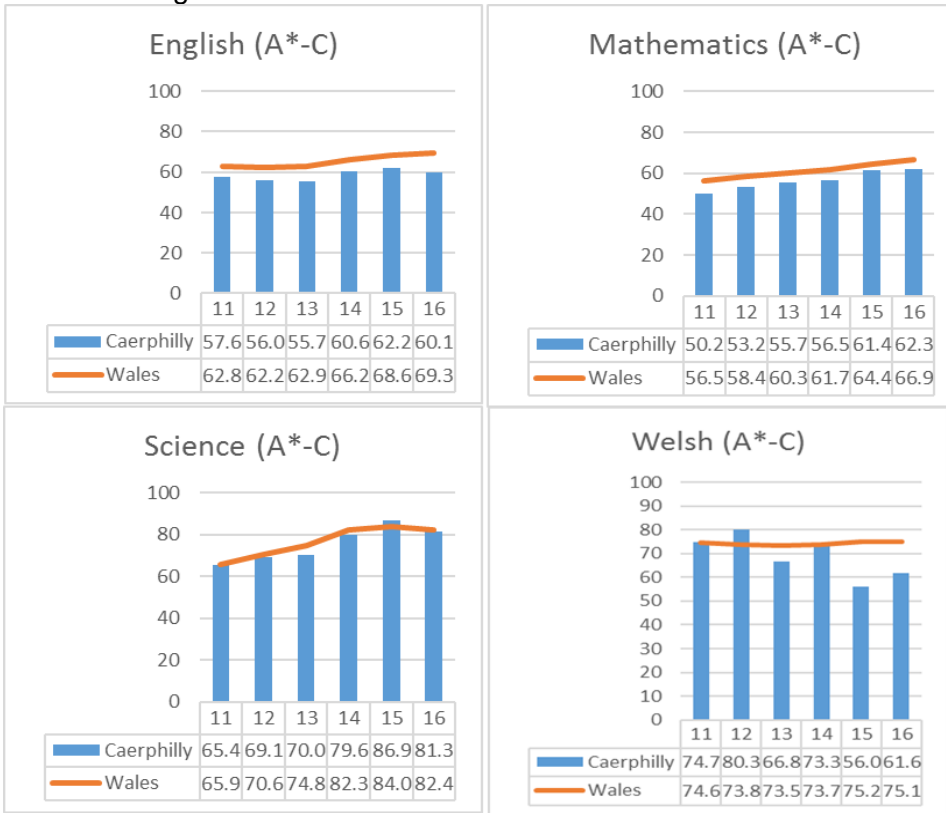
4.3 Final 2016 results indicate mixed performance, but there were increases in L2 inc threshold, Welsh 1st language and Mathematics. The proportion of pupils achieving the Level 2 threshold inclusive of English/Welsh first language and mathematics has improved slightly from 52.6% in 2015 to 53.0% in 2016.



4.4 There were decreases at the L2 & L1 threshold, and capped points score. All indicators are still below the Wales average.

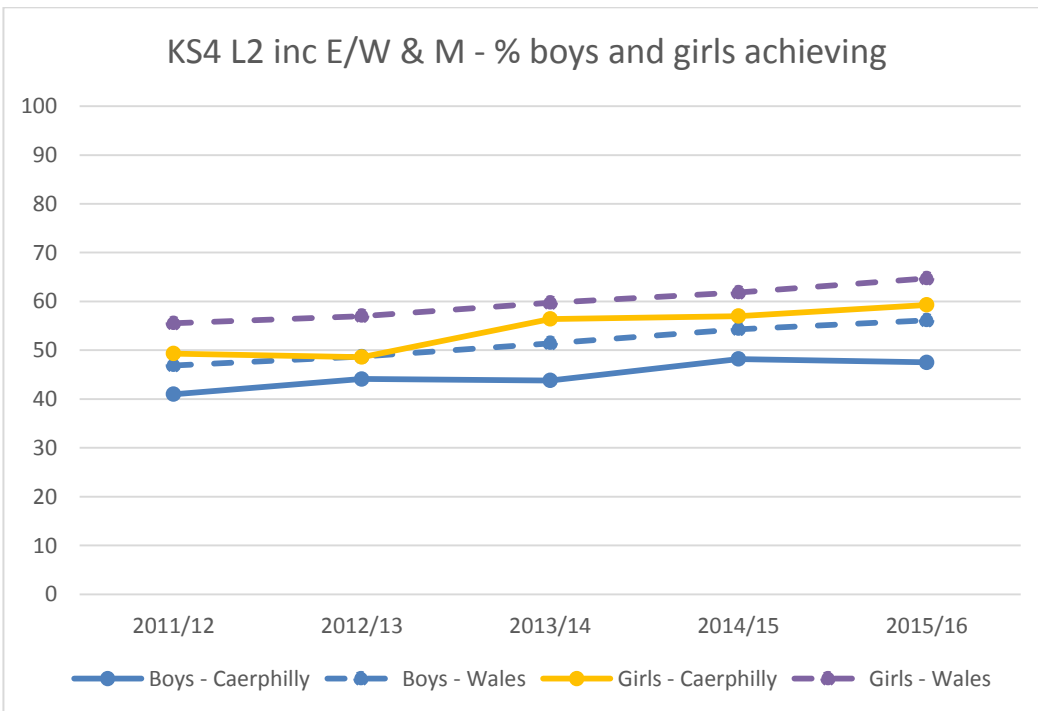


4.5 There were increases in Welsh and Mathematics, but all subjects remain below the national average. Science has decreased from 86.9 to 81.3 and that is a significant drop.



4.6 Gender Differences

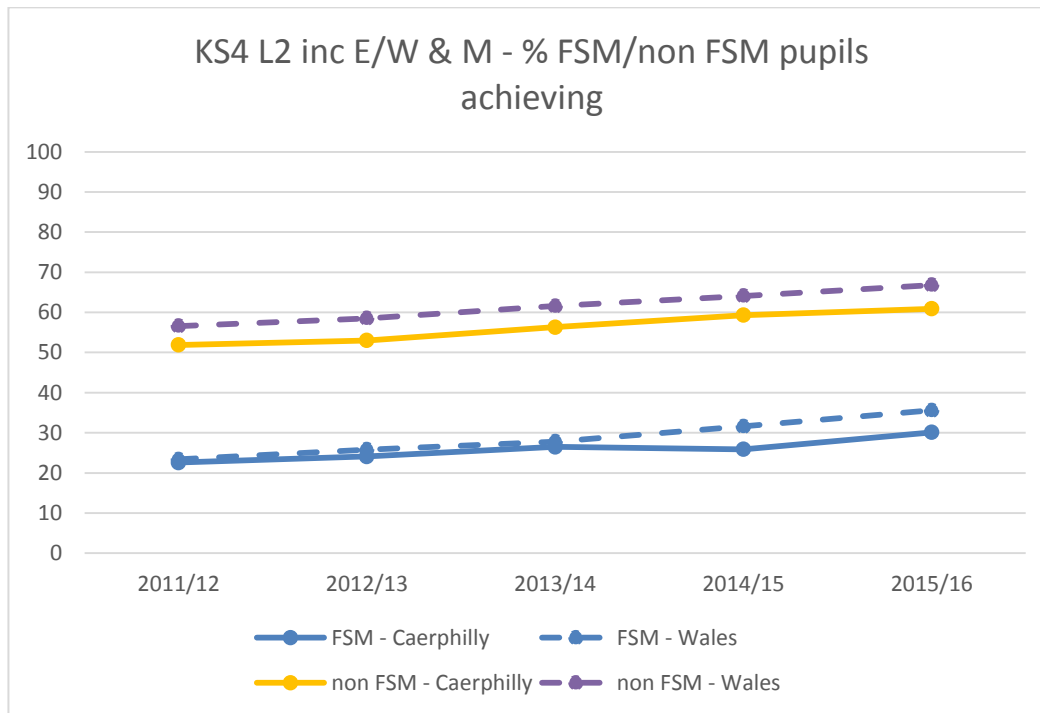
The gender gap in Caerphilly has fluctuated over the past 5 years, and for the Level 2 threshold inclusive of English/Welsh first language and mathematics is now 11.8 percentage points, an increase from 8.8 percentage points in 2015, and remains above the Wales average of 8.6 percentage points. Whilst girls have improved performance at L2 inc, boys' performance declined from 2015. In all areas since 2015, girls have improved performance at a faster rate than boys, or in some indicators declined at a slower rate.



KS4 L2 inc E/W & M (% achieving)	2011/12	2012/13	2013/14	2014/15	2015/16
Boys - Caerphilly	41.0	44.1	43.8	48.2	47.5
Boys - Wales	46.9	48.7	51.4	54.3	56.1
Girls - Caerphilly	49.3	48.6	56.4	57.0	59.3
Girls - Wales	55.5	57.0	59.7	61.8	64.7
Difference (boys% - girls%) -Caerphilly	-8.3	-4.5	-12.6	-8.8	-11.8
Difference (boys% - girls%) - Wales	-8.6	-8.3	-8.3	-7.5	-8.6

4,7 Performance of eFSM / non-eFSM Pupils

The FSM/non FSM gap narrowed in 2016 for the Level 2 threshold inclusive of English/Welsh first language and mathematics from a 33.4 points gap in 2015 to a 30.8 points gap in 2016, which is below the Wales average of 31.2 points. The gap is still wider than it was in 2012, 2013 & 2014. This gap has narrowed this year due to the acceleration of FSM pupil performance relative to non FSM pupil performance.



KS4 L2 inc E/W & M (% achieving)	2011/12	2012/13	2013/14	2014/15	2015/16
FSM - Caerphilly	22.6	24.1	26.5	25.9	30.1
FSM - Wales	23.4	25.8	27.8	31.6	35.6
non FSM - Caerphilly	51.9	53.0	56.3	59.3	60.9
non FSM - Wales	56.6	58.5	61.6	64.1	66.8
Difference (FSM% - non FSM%) - Caerphilly	-29.3	-28.9	-29.8	-33.4	-30.8
Difference (FSM% - non FSM%) - Wales	-33.2	-32.7	-33.8	-32.5	-31.2

4.8 LA Rankings

Improvement is at a slower rate than the national average in all indicators, except for Welsh 1st language. Caerphilly's performance declined in all levels except L2 threshold, and remained lowest performing LA for Welsh.

	L2 inclusive	L2	L1	CSI	Capped Point Score	English	Welsh	Maths	Science
2016	21	19	14	20	20	21	18 (out of 18)	20	16
2015	19	20	7	18	16	20	18 (out of 18)	17	7

L2 inc Eng/Wel & Mat		Level 2 Threshold		CSI		Level 1 Threshold		Capped Points Score	
Ceredigion	70.3	Ceredigion	91.4	Ceredigion	69.2	Gwynedd	97.3	Carmarthenshire	360.0
Vale of Glamorgan	67.1	Rhondda Cynon Taff	90.3	Vale of Glamorgan	66.3	Swansea	96.9	Ceredigion	358.5
Monmouthshire	67.0	Monmouthshire	90.2	Monmouthshire	64.7	Rhondda Cynon Taff	96.7	Swansea	356.6
Gwynedd	65.9	Carmarthenshire	89.2	Gwynedd	64.4	Carmarthenshire	96.6	Gwynedd	355.7
Powys	65.3	Neath Port Talbot	89.0	Carmarthenshire	62.3	Isle of Anglesey	96.3	Powys	353.3
Carmarthenshire	65.1	Bridgend	88.0	Swansea	62.2	Ceredigion	96.1	Monmouthshire	353.3
Swansea	64.7	Vale of Glamorgan	87.8	Powys	61.9	Powys	96.1	Vale of Glamorgan	353.1
Cardiff	62.5	Swansea	86.9	Cardiff	60.1	Monmouthshire	95.9	Bridgend	351.6
Bridgend	61.7	Powys	86.6	Bridgend	60.0	Pembrokeshire	95.9	Rhondda Cynon Taff	351.2
Flintshire	61.5	Gwynedd	85.9	Flintshire	58.8	Merthyr Tydfil	95.4	Neath Port Talbot	349.9
Neath Port Talbot	60.9	Merthyr Tydfil	84.5	Wales	57.6	Bridgend	95.4	Isle of Anglesey	346.8
Wales	60.3	Pembrokeshire	84.5	Pembrokeshire	57.1	Vale of Glamorgan	95.4	Pembrokeshire	346.3
Pembrokeshire	59.3	Cardiff	84.3	Neath Port Talbot	56.8	Flintshire	95.3	Merthyr Tydfil	345.7
Isle of Anglesey	58.8	Wales	84.0	Denbighshire	56.5	Wales	95.3	Wales	344.6
Denbighshire	58.7	Denbighshire	83.6	Isle of Anglesey	55.8	Caerphilly	95.1	Cardiff	343.7
Newport	57.3	Isle of Anglesey	82.8	Rhondda Cynon Taff	55.1	Neath Port Talbot	94.9	Flintshire	343.3
Rhondda Cynon Taff	56.6	Flintshire	82.6	Wrexham	53.9	Torfaen	94.7	Denbighshire	340.4
Conwy	55.9	Conwy	82.1	Conwy	53.1	South East Wales	94.4	Conwy	334.7
South East Wales	55.5	Torfaen	79.9	Merthyr Tydfil	52.3	Cardiff	94.4	South East Wales	330.0
Wrexham	55.3	South East Wales	77.8	South East Wales	51.2	Conwy	94.3	Wrexham	328.6
Merthyr Tydfil	53.9	Caerphilly	76.5	Torfaen	50.7	Wrexham	93.8	Torfaen	328.4
Torfaen	53.5	Newport	74.5	Caerphilly	50.6	Denbighshire	93.7	Caerphilly	327.5
Caerphilly	53.0	Wrexham	73.4	Newport	49.9	Newport	93.4	Newport	327.5
Blaenau Gwent	48.2	Blaenau Gwent	71.4	Blaenau Gwent	40.6	Blaenau Gwent	93.0	Blaenau Gwent	318.1

A*-C English		A*-C Welsh		A*-C mathematics		L2 Science	
Ceredigion	76.6	Pembrokeshire	88.7	Ceredigion	75.4	Vale of Glamorgan	91.3
Monmouthshire	75.5	Bridgend	85.9	Vale of Glamorgan	74.1	Gwynedd	90.8
Powys	75.1	Swansea	82.7	Monmouthshire	72.8	Ceredigion	90.4
Carmarthenshire	74.3	Cardiff	79.8	Swansea	71.7	Bridgend	89.1
Vale of Glamorgan	73.8	Conwy	79.0	Powys	71.5	Merthyr Tydfil	88.3
Cardiff	73.2	Torfaen	78.8	Carmarthenshire	70.7	Rhondda Cynon Taff	85.7
Bridgend	71.6	Vale of Glamorgan	77.3	Gwynedd	70.3	Monmouthshire	85.4
Flintshire	71.5	Isle of Anglesey	77.0	Flintshire	69.5	Carmarthenshire	85.2
Gwynedd	71.4	Wrexham	76.7	Cardiff	67.3	Flintshire	83.9
Swansea	70.2	Wales	75.1	Neath Port Talbot	67.2	Pembrokeshire	83.0
Pembrokeshire	70.0	Gwynedd	74.4	Bridgend	67.2	Torfaen	82.8
Wales	69.3	Rhondda Cynon Taff	74.3	Wales	66.9	Wales	82.4
Neath Port Talbot	69.0	Denbighshire	73.6	Denbighshire	66.7	Wrexham	82.3
Rhondda Cynon Taff	69.0	Ceredigion	73.5	Isle of Anglesey	66.1	Swansea	82.3
Denbighshire	68.5	Carmarthenshire	72.8	Pembrokeshire	65.1	Isle of Anglesey	82.0
Newport	68.5	Neath Port Talbot	68.5	Newport	63.7	Cardiff	81.5
Isle of Anglesey	66.9	Flintshire	68.0	South East Wales	63.6	Caerphilly	81.3
Conwy	66.9	South East Wales	68.0	Conwy	63.6	Powys	81.1
Wrexham	64.7	Powys	65.2	Torfaen	63.0	Denbighshire	80.5
South East Wales	64.2	Caerphilly	61.6	Wrexham	62.8	Neath Port Talbot	78.1
Torfaen	61.6	Monmouthshire	-	Merthyr Tydfil	62.4	South East Wales	76.7
Merthyr Tydfil	61.2	Merthyr Tydfil	-	Caerphilly	62.3	Conwy	76.4
Caerphilly	60.1	Newport	-	Rhondda Cynon Taff	61.6	Newport	68.7
Blaenau Gwent	56.4	Blaenau Gwent	-	Blaenau Gwent	57.4	Blaenau Gwent	62.8

4.9 Individual Schools

Improvement across Caerphilly masks variation between schools and indicators. Performance in St Martin's and Bedwas improved in all indicators and subjects. Performance in Risca improved in all indicators and subjects other than Capped Point. Conversely, Blackwood declined in all indicators and subjects, and Heolddu declined in all indicators and subjects other than L1 threshold. The table below presents the individual schools' data in order of Free School Meal eligibility (lowest to highest).

School	% L2 E,W+M			% L2			% L1			% CSI			Capped Points		
	2014	2015	2016	2014	2015	2016	2014	2015	2016	2014	2015	2016	2014	2015	2016
Ysgol Gyfun Cwm Rhymni	68.4	53.5	62.0	90.2	88.6	69.7	97.4	99.1	96.2	67.5	52.6	59.4	370.1	366.6	330.7
Oakdale Comprehensive	58.7	57.4	58.2	86.2	90.2	89.3	91.7	99.2	97.5	58.7	55.7	47.5	319.0	351.2	336.7
Newbridge School	61.1	64.6	60.6	90.0	93.3	93.9	96.7	100.0	97.5	60.6	64.6	60.6	363.3	379.0	357.3
St Martin's School	50.3	52.3	64.2	58.0	73.6	92.0	93.9	92.5	99.3	42.5	50.0	60.6	309.0	330.1	370.5
Blackwood Comprehensive School	48.8	59.8	57.9	68.2	77.2	73.1	96.5	98.9	97.5	48.3	58.2	54.3	332.5	344.9	328.5
Cwmcarn High School	55.4	55.9	55.2	71.2	82.9	80.0	98.6	99.1	97.1	54.7	55.0	55.2	322.8	334.8	329.1
Lewis School Pengam	49.0	57.8	58.5	88.7	97.4	93.2	93.4	100.0	96.6	47.7	55.2	56.5	332.8	363.3	345.7
Bedwas High School	44.1	35.0	51.0	69.5	65.8	88.2	81.4	91.5	98.0	38.1	33.3	47.1	296.5	303.6	343.6
Lewis Girls' Comprehensive School	49.0	54.3	54.5	81.0	81.4	83.3	96.1	97.7	97.0	49.0	51.9	52.3	350.2	346.3	346.0
St Cenydd School	37.9	50.0	41.9	71.1	72.7	68.8	93.2	97.1	94.6	34.7	48.3	41.9	319.4	334.3	320.8
Risca Community Comprehensive	45.1	44.0	56.8	80.5	72.0	75.7	97.6	96.0	97.3	35.4	38.7	48.6	339.0	336.8	327.2
Pontllanfraith Comprehensive	47.1	49.6	42.6	53.8	70.8	76.2	80.8	86.7	93.1	47.1	46.9	42.6	270.9	304.8	317.7
Heolddu Comprehensive School	35.9	48.9	44.3	66.9	64.9	58.2	95.1	96.8	99.2	35.9	48.9	41.8	313.8	318.9	315.4
Rhymney Comprehensive School, Caerphilly	41.5	42.9	49.6	59.1	80.0	66.9	95.0	99.3	99.2	37.7	36.4	49.6	301.1	325.7	310.3
Wales	55.4	57.9	60.3	82.3	84.1	84.0	94.0	94.4	95.3	52.6	54.8	57.6	340.8	343.5	344.6

School	English (A*-C)			Welsh (A*-C)			Maths (A*-C)			% L2 Science		
	2014	2015	2016	2014	2015	2016	2014	2015	2016	2014	2015	2016
Ysgol Gyfun Cwm Rhymni	75.2	61.8	62.8	73.3	56.0	61.6	73.5	58.8	72.2	94.4	96.5	65.4
Oakdale Comprehensive	62.4	62.3	63.1				72.5	69.7	72.1	91.7	93.4	80.3
Newbridge School	65.0	68.2	68.2				67.2	76.4	70.7	88.9	92.3	92.9
St Martin's School	59.1	63.8	70.1				57.5	61.5	73.7	74.0	85.1	93.4
Blackwood Comprehensive School	65.2	74.5	70.1				53.2	63.0	61.4	79.1	87.5	75.6
Cwmcarn High School	66.9	73.0	67.6				61.9	61.3	61.9	95.7	97.3	98.1
Lewis School Pengam	57.6	62.9	58.5				55.6	68.1	73.5	86.1	96.6	90.5
Bedwas High School	55.9	37.6	53.9				51.7	51.3	70.6	56.8	76.1	81.4
Lewis Girls' Comprehensive School	71.9	66.7	70.5				49.7	61.2	55.3	90.2	85.3	87.9
St Cenydd School	50.5	58.1	49.5				45.3	58.7	52.2	48.4	68.6	73.1
Risca Community Comprehensive	54.9	70.7	71.6				57.3	48.0	64.9	75.6	72.0	86.5
Pontllanfraith Comprehensive	51.9	53.1	49.5				53.8	59.3	50.5	73.1	82.3	92.1
Heolddu Comprehensive School	52.1	55.3	52.5				39.4	54.3	52.5	96.5	98.9	91.0
Rhymney Comprehensive School, Caerphilly	50.3	58.6	55.1				50.3	57.9	58.3	65.4	84.3	85.8
Wales	66.2	68.6	69.3	73.7	75.2	75.1	61.7	64.4	66.9	82.3	84.0	82.4

4.10 Free School Meal Benchmark Summary

When FSM benchmark data is used to compare the performance of similar schools, the number of Caerphilly schools above the median has increased for the Level 2 threshold. It has reduced for the Level 1, CSI, Capped points, English and Mathematics. There is only one Welsh medium secondary school, and performance has been in quarter 4 in 2 out of the past 3 years. The number of schools in the bottom quarter has increased for L2 inc, English, L1, CSI and Capped points.



Individual school benchmark performance is presented in Appendix A.

4.11 Welsh Government Modelled Expectation

The gap between the LA benchmarks for performance modelled on FSM entitlement and actual performance increased in 2016, with the Level 2 threshold including English/Welsh and mathematics 2.1 percentage points below the expected achievement. For capped point score Caerphilly widened the gap to 13.3 points below the expected achievement, similar to 2014.

		2012	2013	2014	2015	2016
Level 2 threshold including English/Welsh and maths	Actual	45	46	50.2	52.8	54.7
	Target	44	46	49.5	53.2	56.8
	Difference	1	0	0.7	-0.4	-2.1
Capped Average Wider Point Score	Actual	313	320	327.7	341.9	334.5
	Target	316	329	340.7	345.7	347.8
	Difference	-3	-9	-13	-3.8	-13.3

5. WELL-BEING OF FUTURE GENERATIONS

- 5.1 This report content (Education attainment) contributes to the Well being Goals as noted and explained in 3.1.
- 5.2 This report is for information only and so does not analyse the 5 ways of working in terms of decision making but it does recognise that going forward interventions that are put in place to improve attainment must take a **long term** view as part of its impact on life chances, employment and quality of life. One of the principles of the 5 ways of working is to look at how we can **prevent** problems occurring and to do this we need to understand what the causes are. Causes within attainment are complex although one of the main ones is deprivation. The measure that is commonly used to measure deprivation is a pupil's eligibility to receive Free School Meals. The data provides an insight into the performance of all pupils in comparison to the pupils in receipt of Free School Meals and the gap in performance increases throughout school life (para 4.7). One of the Council's Well-being Objectives is to 'Improve outcomes for all learners but we want to particularly focus on those vulnerable to underachievement. We have an action plan to achieve this and it we will **involve and collaborate** with a range of partners such as schools, parents, governors and children to raise aspiration and attainment.

6. EQUALITIES

- 6.1 There is no specific equalities impact in relation to the content of this report. When performance information is discussed with schools as part of the monitoring, challenge, support and intervention programme, equalities issues, such as gender and ethnicity are taken into account. Similarly the Local Authority self-evaluation considers all equalities issues.

7. LA – KEY STAGE 5

7.1 Performance Data – A Level Only

A Level (A2)									
	Total number of A Level (A2) Entries		Percentage of A Levels (A2) qualifications achieved (A*-E)			Percentage of A Levels (A2) AT Grade A/A*			
	2015	2016	2015	2016	Difference	2015	2016	Difference	
Caerphilly	1,108	1,107	99.2	95.9	▼ -3.3	15.4	16.7	▲ 1.3	
South East Wales	4,255	4,364	99.3	97.2	▼ -2.2	19.4	20.4	▲ 1.1	
Wales	26,392	23,871	99	99	▼ 0.0	23	22	▼ -1.0	

Cohort size 2015 = 613, Cohort size 2016 = 593

A*-E

- The percentage of A levels at A*-E has fallen from 99.2% to 95.9%.
- The pupils of Caerphilly achieved 1062 A-Levels at A*-E in 2016, 37 less than in 2015.
- The cohort has decreased slightly, and the number of A levels at A*-E awarded per student remained at 1.8.

A*-A

- The percentage of A levels at A*-A increased from 15.4% in 2015 to 16.7% in 2016.
- The pupils of Caerphilly achieved 185 A-Levels at A*-A in 2016, 14 more than in 2015.
- The number of A levels at A*-A awarded per student remains at 0.3.

In 2015 there were only 9 A-Level entries which were graded as fail, but in 2016 this increased to 45. This may suggest that some schools entered a small number of pupils for one or more A Levels, where an alternative vocational qualification, may have been more appropriate.

Performance Data – Level 3 Threshold (includes A Level / Vocational Qualifications)

Level 3 Threshold									
	Total number		Percentage of students entering			Percentage of students achieving			
	2015	2016	2015	2016	Difference	2015	2016	Difference	
Caerphilly	560	546	91.4	92.1	▲ 0.7	97.7	97.1	▼ -0.6	
South East Wales	2,098	2,038	89.4	90.5	▲ 1.1	95.6	97.9	▲ 2.3	
Wales	11,838	10,804	87.9	89.5	▲ 1.7	97.0	98.0	▲ 1.0	

- When vocational qualifications are taken into account and the Welsh Government's main indicator of post-16 performance, the Level 3 threshold, is considered performance decreased slightly from 97.7% to 97.1%.

This 0.6 percentage point decrease is at odds with the 2.3 percentage point increase across the EAS region, and 1.0 across Wales.

8. FINANCIAL IMPLICATIONS

8.1 There are no specific financial implications.

9. PERSONNEL IMPLICATIONS

9.1 There are no specific personnel implications

10. CONSULTATIONS

10.1 All comments have been reflected in the report.

11. RECOMMENDATIONS

11.1 Members are asked to note and scrutinise the content of the report.

12. REASONS FOR THE RECOMMENDATIONS

12.1 To keep Members informed of standards achieved by Caerphilly learners at, key stage 4 and key stage 5.

13. STATUTORY POWER

- 13.1 Children and Families Measure (Wales) 2010.
- 13.2 Schools Standards and Organisation (Wales) 2013.
- 13.3 Education Act 1996.
- 13.4 Wellbeing of Future Generations (Wales) 2015.
- 13.5 Schools Causing Concern 2013.

Author: Andrew Williams, Principal Challenge Adviser
Education Achievement Service

Consultees: Chris Burns, Interim Chief Executive
Nicole Scammell, Acting Director of Corporate Services & S151 Officer
Christina HARRY, Corporate Director Communities
Dave Street, Corporate Director – Social Services
Keri Cole, Chief Education Officer
Councillor Derek Havard, Cabinet Member, Education & Lifelong Learning
Councillor Wynne David, Chair of Education Scrutiny Committee
Councillor James Pritchard, Vice Chair of Education Scrutiny Committee
Ros Roberts, Performance Manager

Appendices:

Appendix A - Key Stage 4, School Benchmark Quarter Performance